

HOUSTON, TEXAS

INDUSTRIAL CONTROLS, INC.

MOTOR CONTROL AND POWER DISTRIBUTION PRODUCTS FOR THE INDUSTRY

Switchracks



Hot dip galvanized structural steel switchrack with NEMA 4X stainless steel enclosed breakers, starters, panelboard & busbox.



HOUSTON, TEXAS

INDUSTRIAL CONTROLS, INC.

MOTOR CONTROL AND POWER DISTRIBUTION PRODUCTS FOR THE INDUSTRY



Switchrack with NEMA 4X stainless steel enclosed size 3 combination starters.



HOUSTON, TEXAS

INDUSTRIAL CONTROLS, INC.

MOTOR CONTROL AND POWER DISTRIBUTION PRODUCTS FOR THE INDUSTRY



NEMA 7 switchracks shipped in 2 1/2 weeks for Chevron Refinery in Pascagoula, Mississippi after Hurricane George put it 7 feet under water.



HOUSTON, TEXAS

INDUSTRIAL CONTROLS, INC.

MOTOR CONTROL AND POWER DISTRIBUTION PRODUCTS FOR THE INDUSTRY



Additional NEMA 7 switchracks for Chevron. A total of five unit were built & shipped in 5 1/2 weeks, all ahead of schedule.



HOUSTON, TEXAS

INDUSTRIAL CONTROLS, INC.

MOTOR CONTROL AND POWER DISTRIBUTION PRODUCTS FOR THE INDUSTRY



Details of the Chevron switchracks. Note the conduit outlet box on the leg of the rack below. The switchracks included a roof with lights that were shipped at a later date. Half of a union in fitted into the top of the outlet box and it's mate was with the roof for easy makeup in the field.



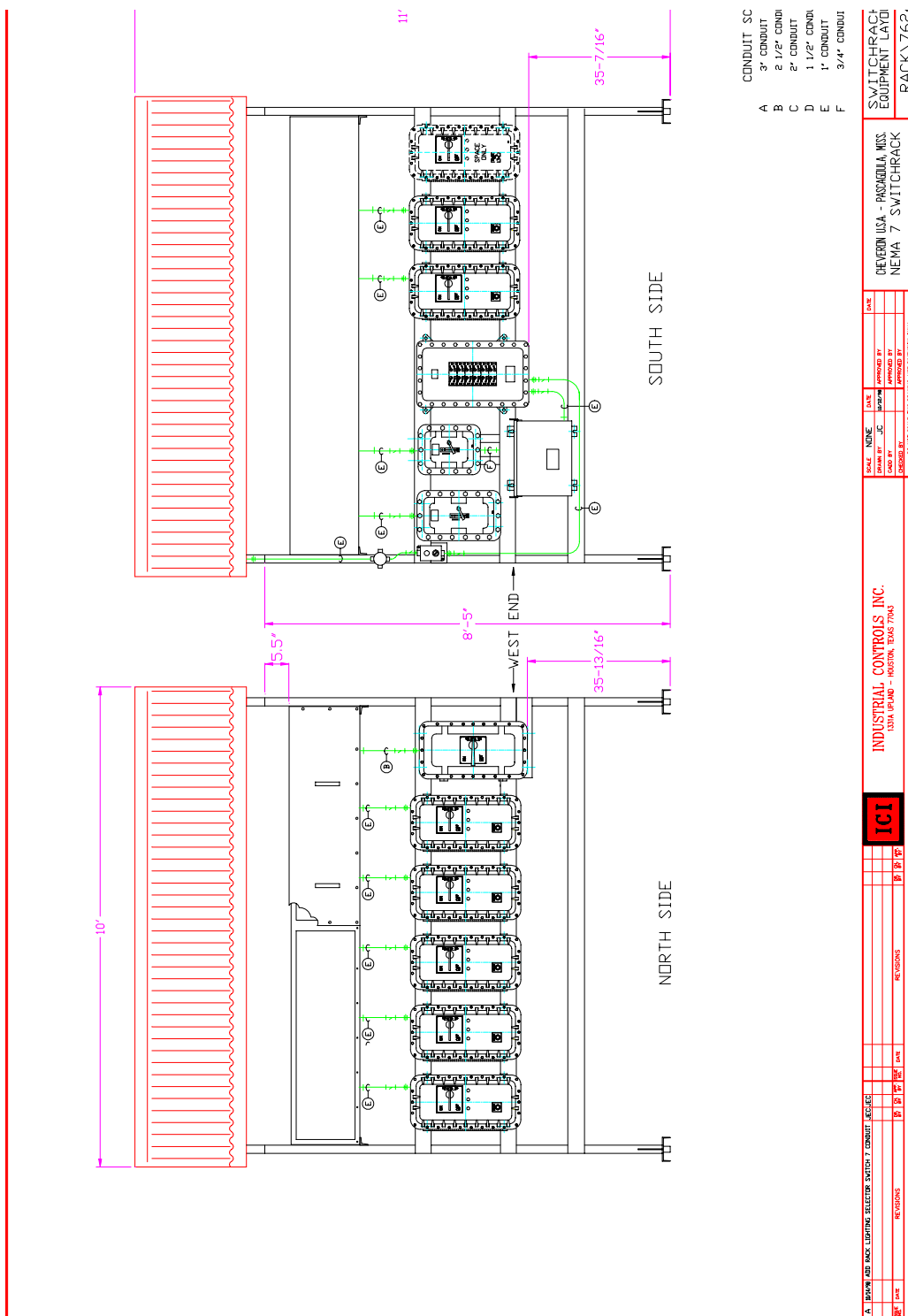
HOUSTON, TEXAS

INDUSTRIAL CONTROLS, INC.

MOTOR CONTROL AND POWER DISTRIBUTION PRODUCTS FOR THE INDUSTRY

Loading the first two racks up for Pascagoula.





AutoCad drawing with materials layout, conduit and elevation details.

HOUSTON, TEXAS

INDUSTRIAL CONTROLS, INC.

MOTOR CONTROL AND POWER DISTRIBUTION PRODUCTS FOR THE INDUSTRY



NEMA 4X fire control panel with rain hood.



HOUSTON, TEXAS

INDUSTRIAL CONTROLS, INC.

MOTOR CONTROL AND POWER DISTRIBUTION PRODUCTS FOR THE INDUSTRY



NEMA 7 (Class 1, Division 2) switchrack with Allen-Bradley Uni-Lock enclosed starters.

NEMA 3R power distribution rack for temporary power at a shipyard. Ships being repaired can tie into either an 800A/3Ø/480VAC breaker or a 200A/3Ø/480VAC fusible disconnect switch.



HOUSTON, TEXAS

INDUSTRIAL CONTROLS, INC.

MOTOR CONTROL AND POWER DISTRIBUTION PRODUCTS FOR THE INDUSTRY



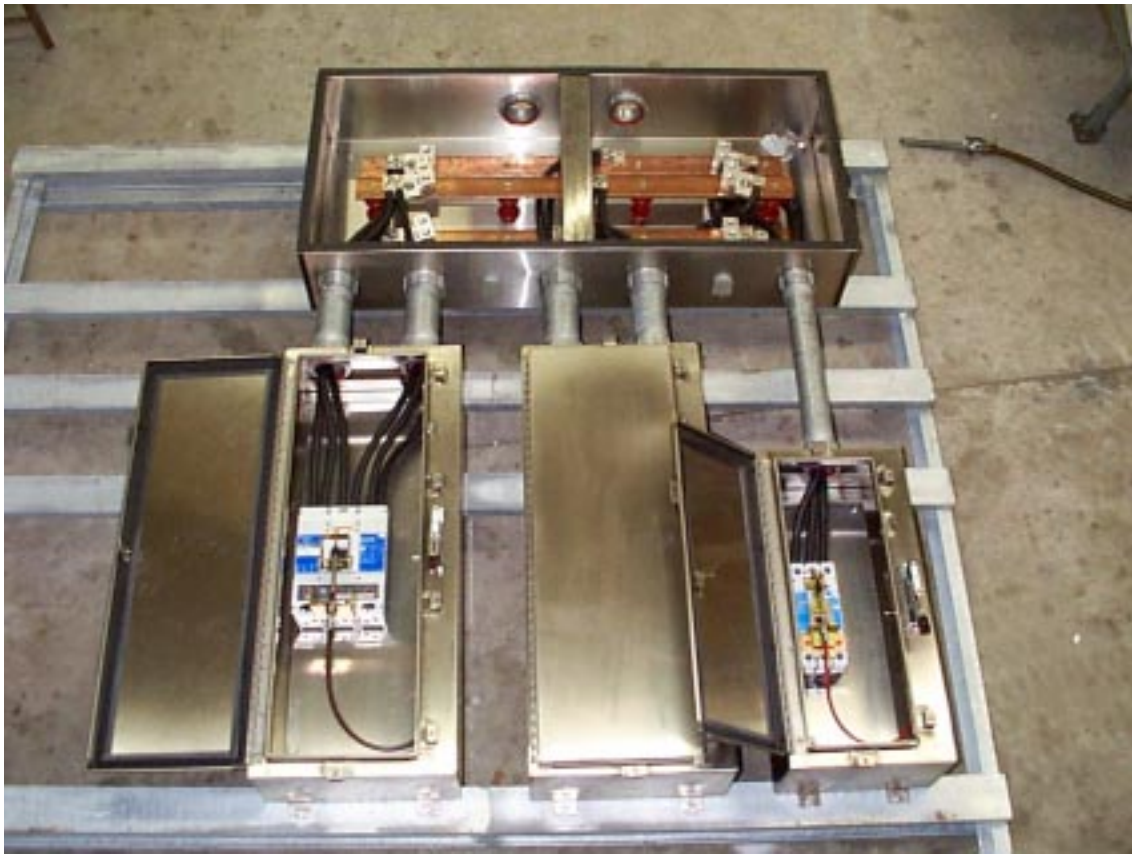
NEMA 4X switchrack
with roof.



HOUSTON, TEXAS

INDUSTRIAL CONTROLS, INC.

MOTOR CONTROL AND POWER DISTRIBUTION PRODUCTS FOR THE INDUSTRY



NEMA 4X power distribution rack.



HOUSTON, TEXAS

INDUSTRIAL CONTROLS, INC.

MOTOR CONTROL AND POWER DISTRIBUTION PRODUCTS FOR THE INDUSTRY



Temporary power unit with NEMA 4X stainless steel enclosed components. The transformer in the center is 225 KVA epoxy encapsulated and stainless steel enclosed. This unit and the ones on the following two pages are for the Exxon Diana offshore rig. When completed it will be the largest of its kind in the world.



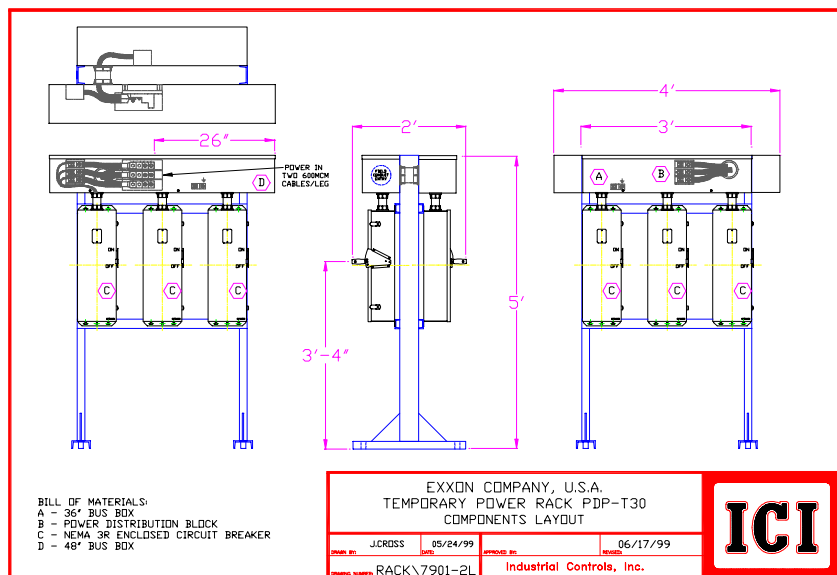
HOUSTON, TEXAS

INDUSTRIAL CONTROLS, INC.

MOTOR CONTROL AND POWER DISTRIBUTION PRODUCTS FOR THE INDUSTRY



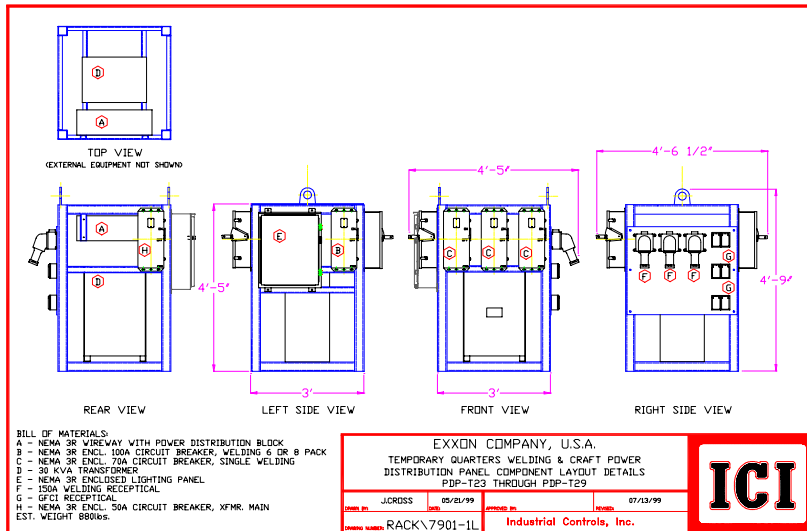
NEMA 3R rack complete with six 60A circuit breakers.



HOUSTON, TEXAS

INDUSTRIAL CONTROLS, INC.

MOTOR CONTROL AND POWER DISTRIBUTION PRODUCTS FOR THE INDUSTRY



Temporary power unit with NEMA 3R enclosed components. This unit includes 70A/3Ø/480VAC welding recepticals and 20A/120VAC GFCI convenience recepticals.



HOUSTON, TEXAS

INDUSTRIAL CONTROLS, INC.

MOTOR CONTROL AND POWER DISTRIBUTION PRODUCTS FOR THE INDUSTRY



NEMA 4X switchrack. Note that all external devices except for fastening hardware is fiberglass.



HOUSTON, TEXAS

INDUSTRIAL CONTROLS, INC.

MOTOR CONTROL AND POWER DISTRIBUTION PRODUCTS FOR THE INDUSTRY



NEMA 4X stainless steel switchrack. The two units with windows are variable frequency drives.



NEMA 7 Class I, Division 2 switchrack with canopy, area lighting and all starters in "Uni-Lock" enclosures.